

XTREME LOCK-IN MARCH 12-13, 2010

TENTATIVE XTREME LOCK-IN SCHEDULE (Orange = New for 2010)

2010 THEME: "Let's Fly" (1 Thess. 4:17)

7:30 PM	PARTICIPANT ARRIVAL/REGISTRATION	- Falkenroth Hall (FH)
8:00 PM	WELCOME/INSTRUCTIONS/ANNOUNCEMENTS/PRAYER	-FH
8:15 PM	DEVO TIME – "Let's Fly"*	-FH
9:00 PM	"GET TO KNOW YA" ICEBREAKERS/MIXERS	-FH
9:45 PM	BREAK	
10:00 PM	CHAPEL/PRAISE/WORSHIP WITH GUEST BAND, T.B.A.	- Sanctuary
11:30 PM	LIGHT SNACKS/POP PARTY	-FH
11:30 PM	XTREME MOVIE/"PRAY 4 ME"*/VIDEO GAMES/YTH. SERVE***	-Facilities



1:30 AM BUSES TAKE GROUP TO MAPLEWOOD BOWL
(102nd & MAPLE) 1:45-3:45 AM

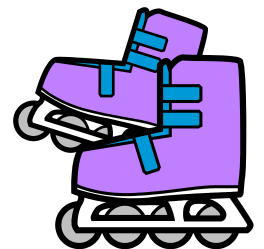
Notes: Bowling alley offers unlimited hot dog/chips/drinks available at no add'l charge

3:45 AM BUSES TAKE GROUP TO SKATEDAZE****
(South of 132nd & CENTER) 4:00-6:30 AM

Notes: a light snack bar is available at activity center; laser tag and climbing wall are also available as alternate activities, \$3.50 per play; youth should bring add'l money for Laser tag/snacks

6:45AM PARENTS/DRIVERS PICK UP STUDENTS AT ST. MARK

*Our devotion time this year focuses on what's goin' down in God's Kingdom, and one thing we know for sure – it's going to be something completely different! We've include a souvenir gift to share with you this year to remind you of what's to come – so be ready to "take flight."



**PRAY 4 ME - This activity is once again available to youth desiring an opportunity to meet and join St. Mark's Pastor/Elders for special prayers and a blessing during (or in addition to) participating in the movie event. Note that a Pastor/elders will be present during this time actively praying for each of our lock-in participants and their specified prayer requests. We invite you to reflect ahead of time and come prepared to enlist the power of the saints to lift up concerns and needs.

***This year we've added an option to spend time giving back for the grace we ourselves have received in Jesus Christ. We'll be packing Hope Totes for the Omaha Open Door homeless ministry, please take a look at the service slip enclosed on the back of the registration schedule to learn how you can participate and help.

****What? No ice skating? Well, that's true. We've noted in recent years that with some of our schedule upgrades to keep costs under control, ice skating gets a bit cold and tiring in the early morning hours. So, we've found a way to provide more (and warmer) options to keep everyone engaged for nearly the same cost. Come check it out and Laser Up for an optional \$3.50/play!